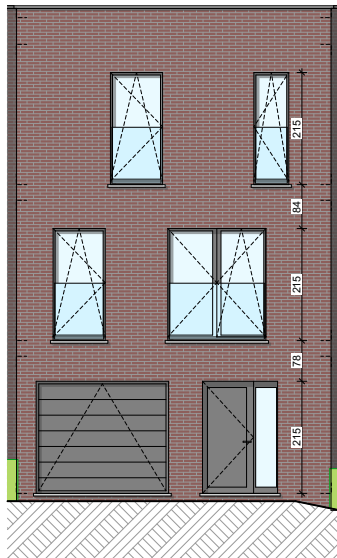


WAREMME - QUARTIER DES HIRONDELLES

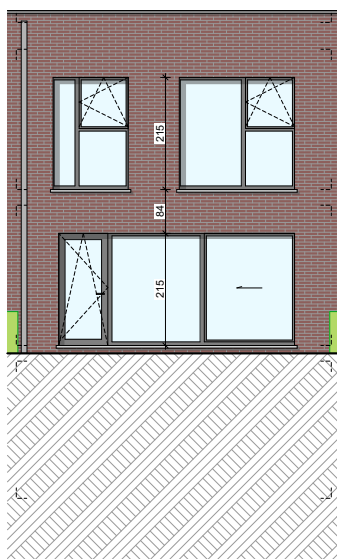
**LOT
09**

Maison 2 façades

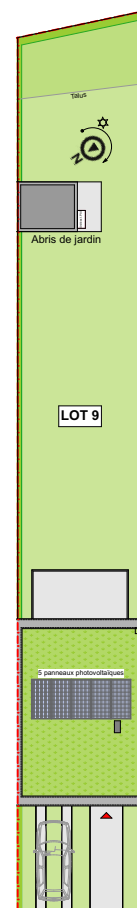
3 chambres - superficie : ± 178 m² - Terrain : ± 284 m²
Garage



Façade avant



Façade arrière



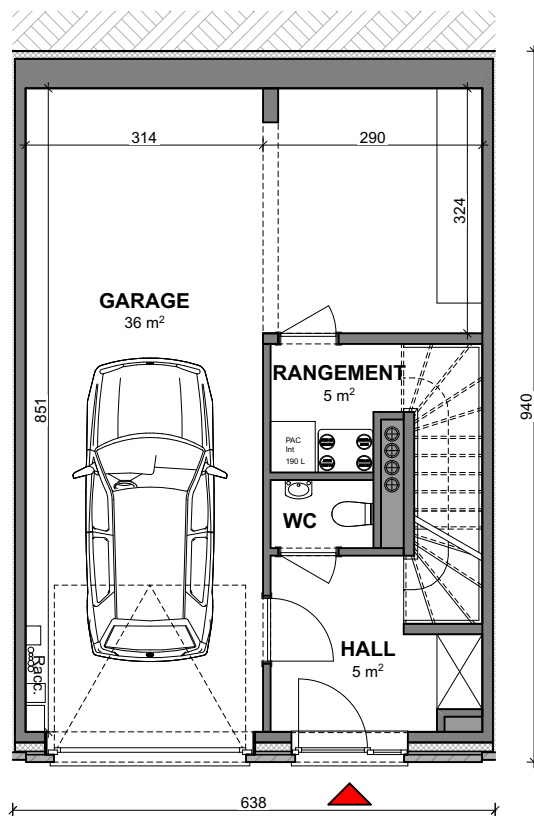
Parcelle

Façades

Contactez Julien Gratia
T +32 4 268 01 44
matexi.be - julien.gratia@matexi.be



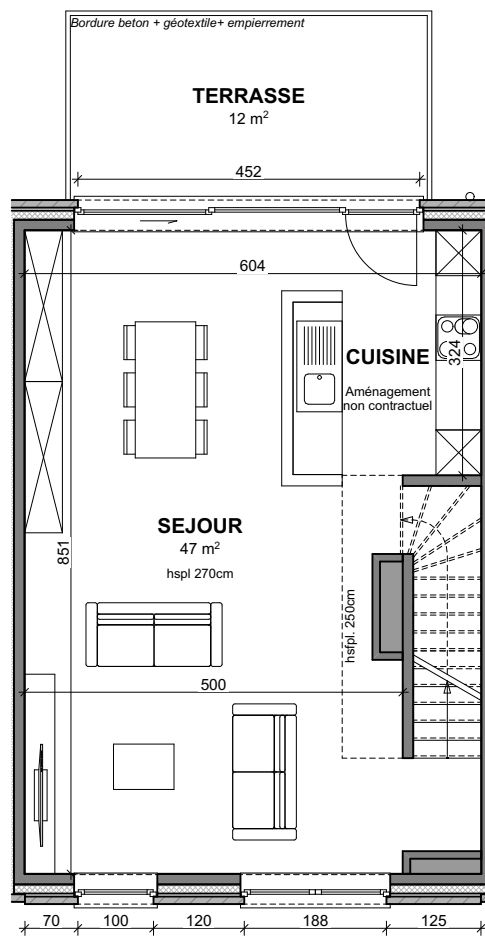
LOT 09



Vue en plan - Sous-sol (garage)

Surface nette approximative : 51m²

LOT 09



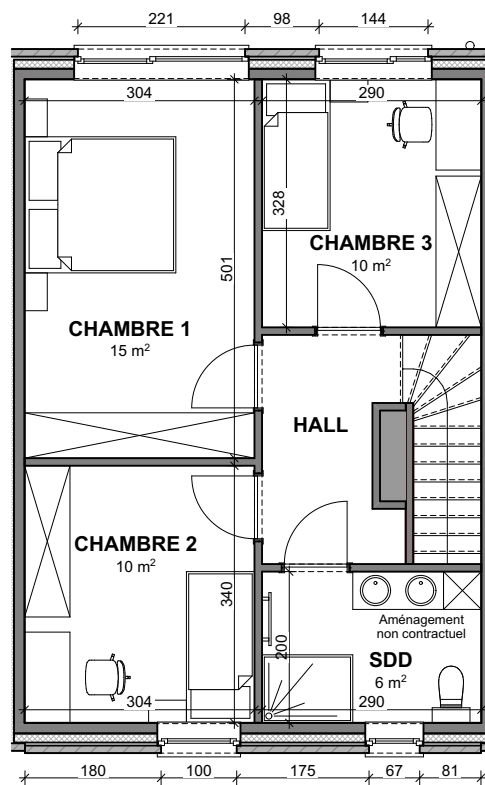
Vue en plan - Rez (jardin)

Surface nette approximative : 51m²

Contactez Julien Gratia
T +32 4 268 01 44
matexi.be - julien.gratia@matexi.be



LOT 09



Vue en plan - Etage

Surface nette approximative : 51m²