

**LOT  
11**

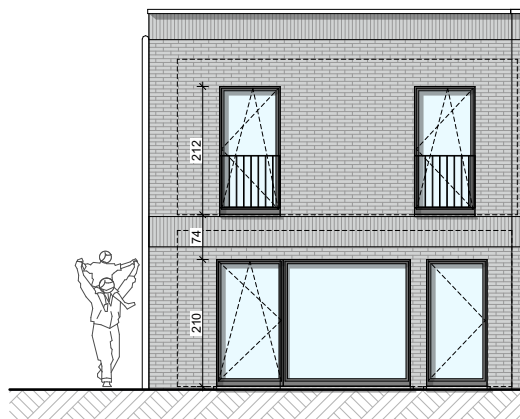
OUPEYE - AU VIVIER

## Maison 3 façades

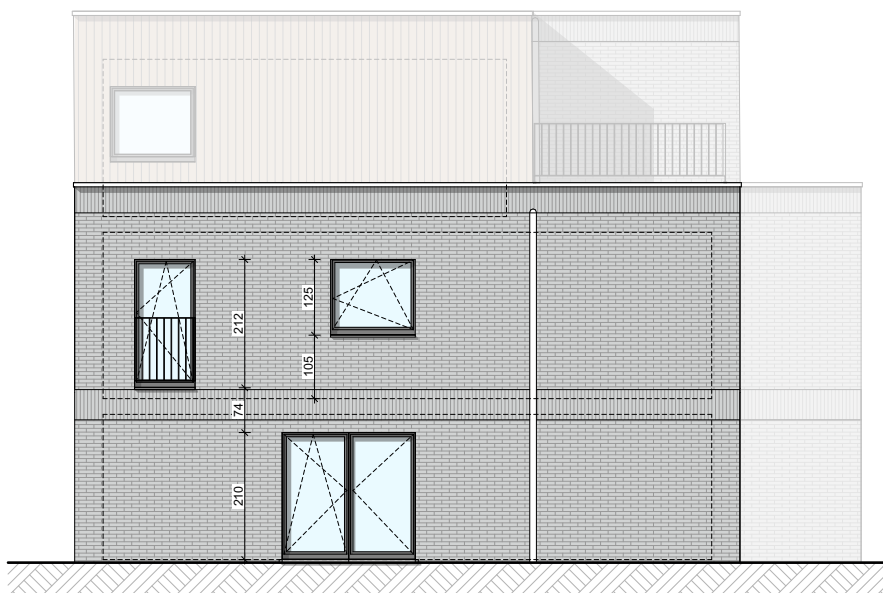
3 chambres - superficie brute : ± 138 m<sup>2</sup> - terrain : ± 246 m<sup>2</sup>  
PEB A



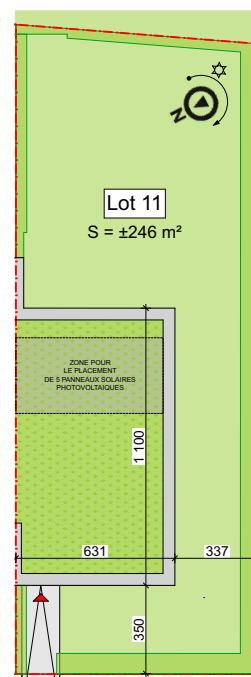
Façade avant



Façade arrière



Façade latérale droite



Parcelle

Façades

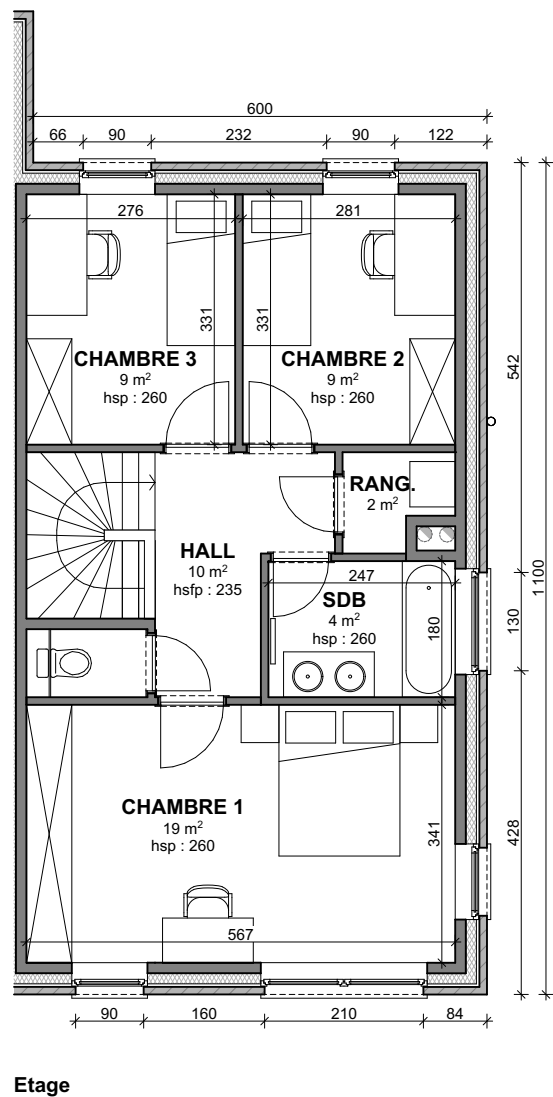
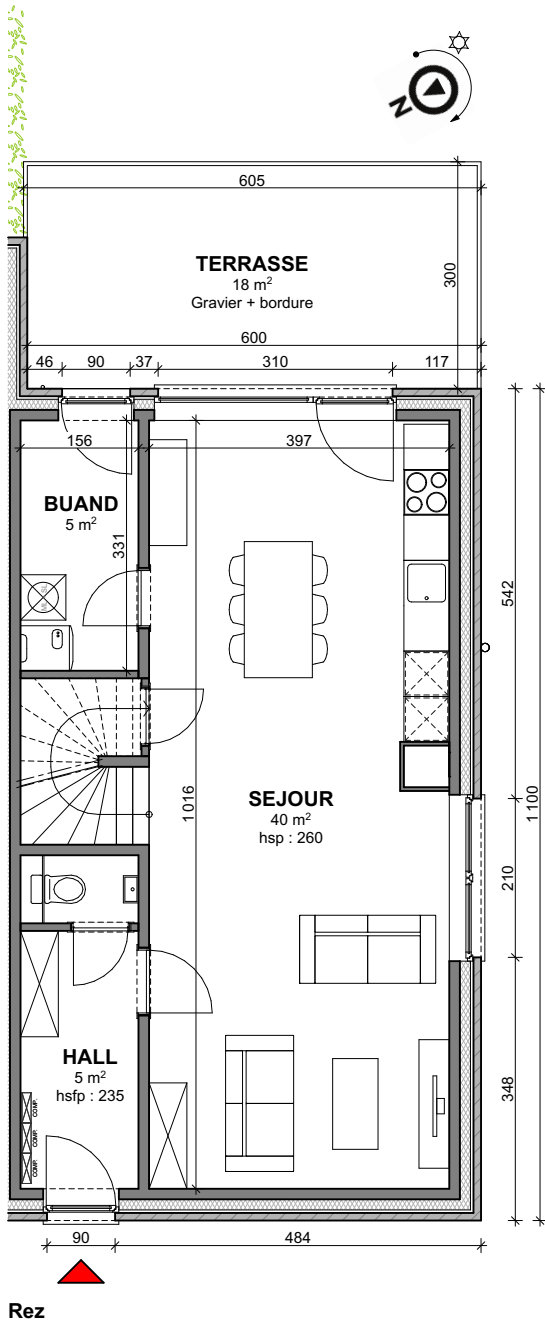
Contactez notre Sales Consultant

T +32 4 268 03 20

matexi.be - info@matexi.be



# LOT 11



Vue en plan - Rez et étage