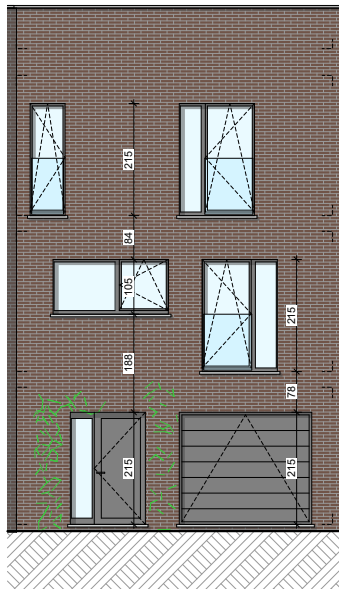


WAREMME - QUARTIER DES HIRONDELLES

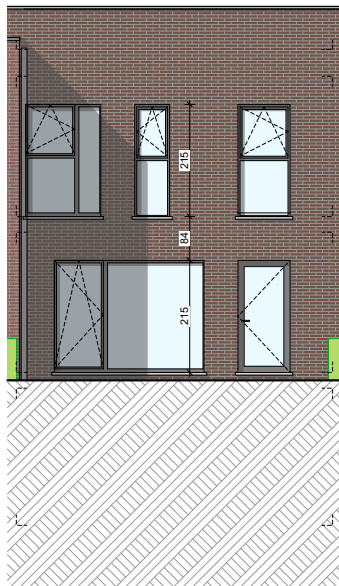
**LOT
11**

Maison 2 façades

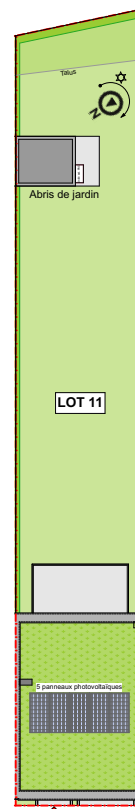
3 chambres - superficie : ± 180 m² - Terrain : ± 252 m²
Garage



Façade avant



Façade arrière



Parcelle

Façades

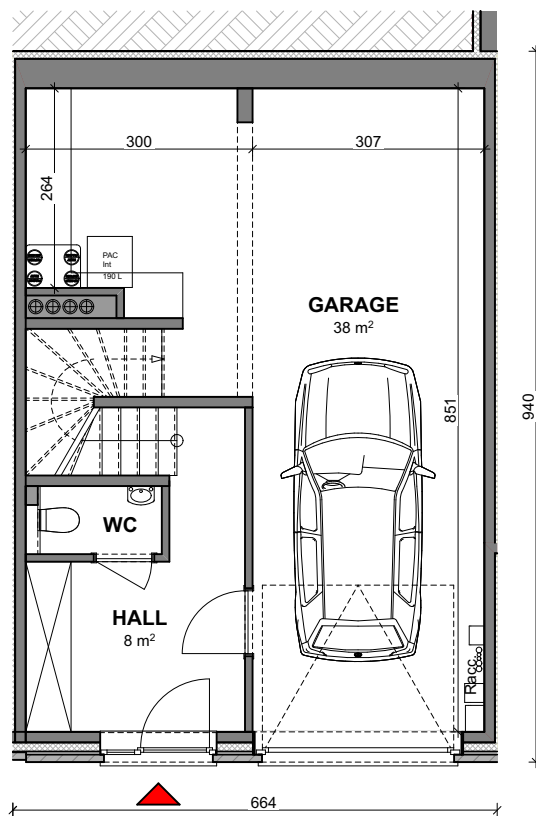
Contactez Julien Gratia

T +32 4 268 01 44

matexi.be - julien.gratia@matexi.be



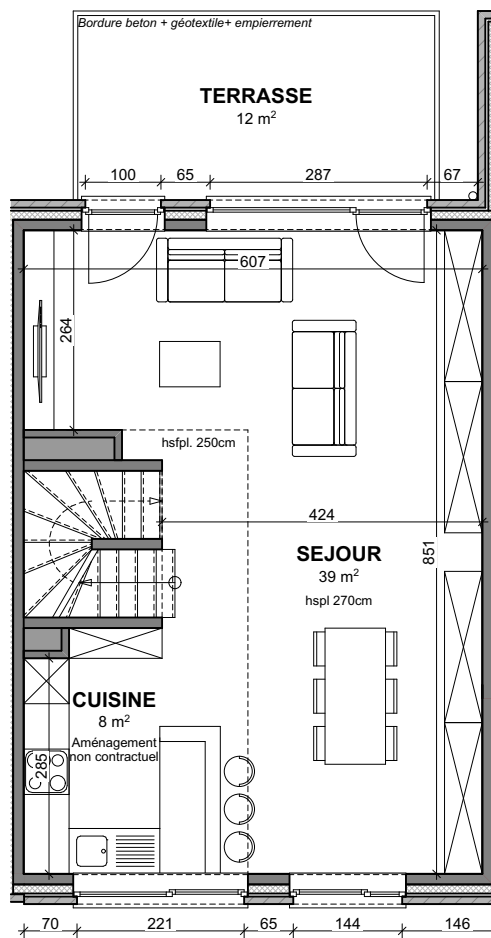
LOT 11



Vue en plan - Sous-sol (garage)

Surface nette approximative : 52m²

LOT 11



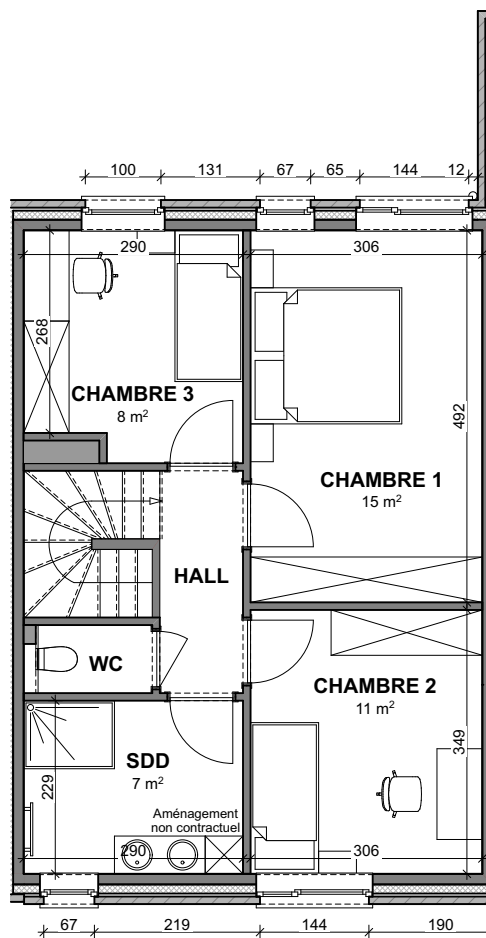
Vue en plan - Rez (jardin)

Surface nette approximative : 52m²

Contactez Julien Gratia
T +32 4 268 01 44
matexi.be - julien.gratia@matexi.be



LOT 11



Vue en plan - Etage

Surface nette approximative : 52m²