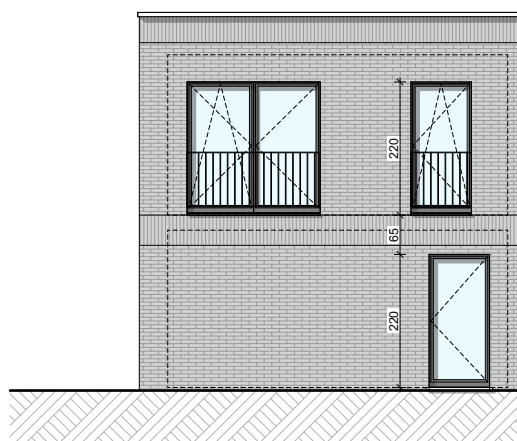


**LOT  
19**

OUPEYE - AU VIVIER

## Maison 3 façades

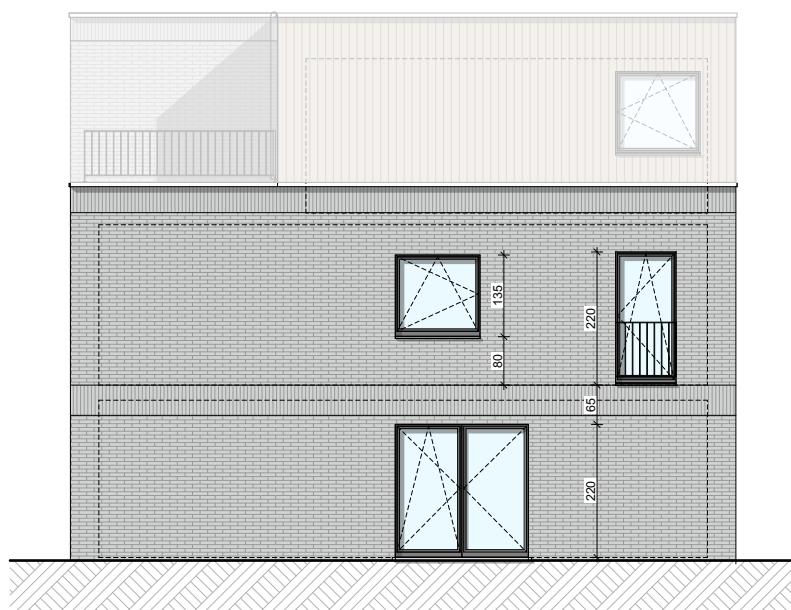
3 chambres - superficie brute : ± 138 m<sup>2</sup> - terrain : ± 271 m<sup>2</sup>  
PEB A



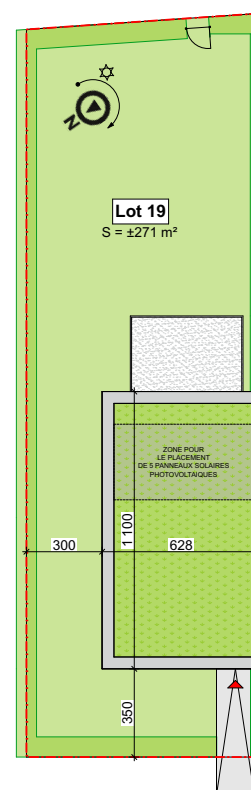
Façade avant



Façade arrière



Façade latérale gauche



Parcelle

Façades

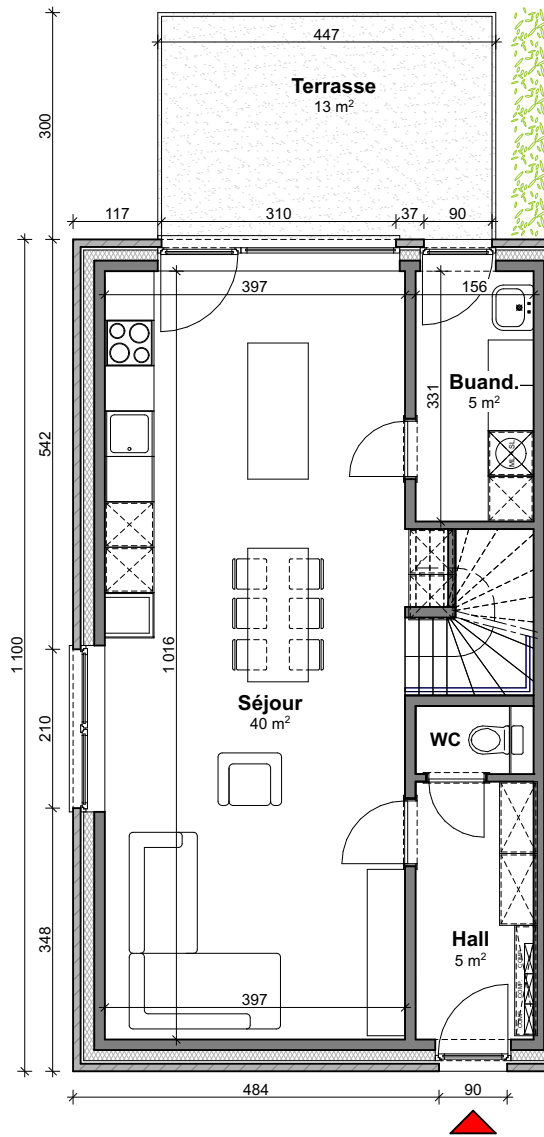
Contactez notre Sales Consultant

T +32 4 268 03 20

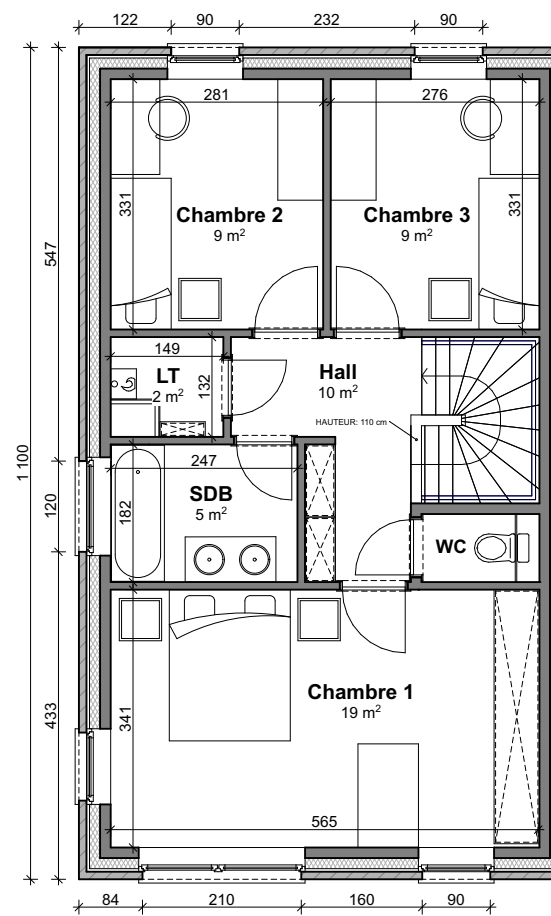
matexi.be - info@matexi.be



# LOT 19



Rez



Étage

## Vue en plan - Rez et étage