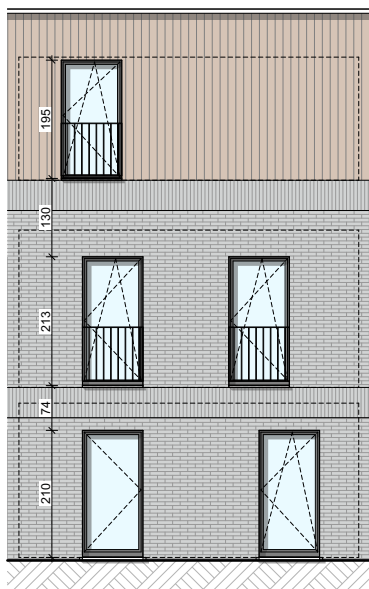


**LOT  
15**

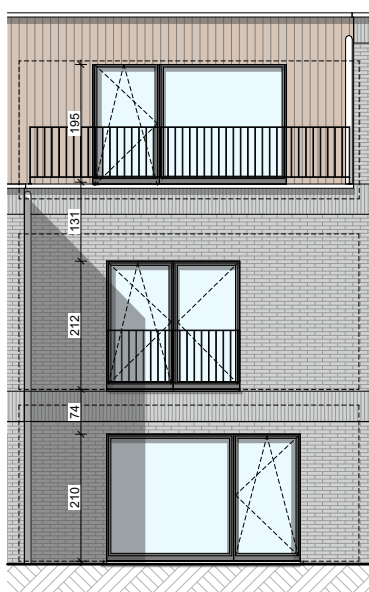
OUPEYE - AU VIVIER

## Maison 2 façades

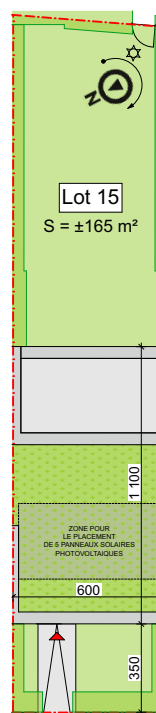
2(4) chambres - superficie brute :  $\pm 199 \text{ m}^2$  - terrain :  $\pm 165 \text{ m}^2$   
PEB A



Façade avant



Façade arrière



Parcelle

Façades

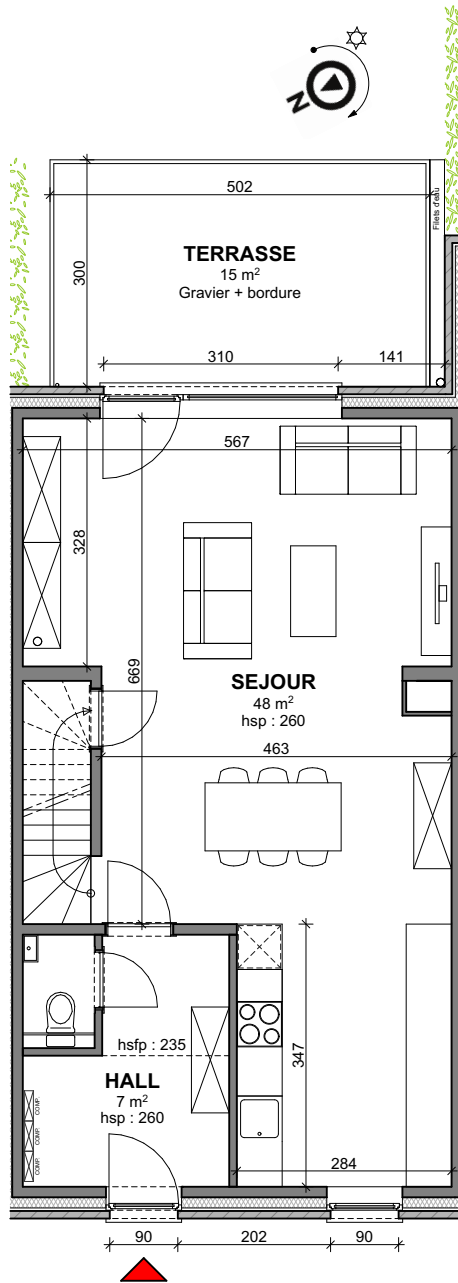
Contactez notre Sales Consultant

T +32 4 268 03 20

matexi.be - info@matexi.be

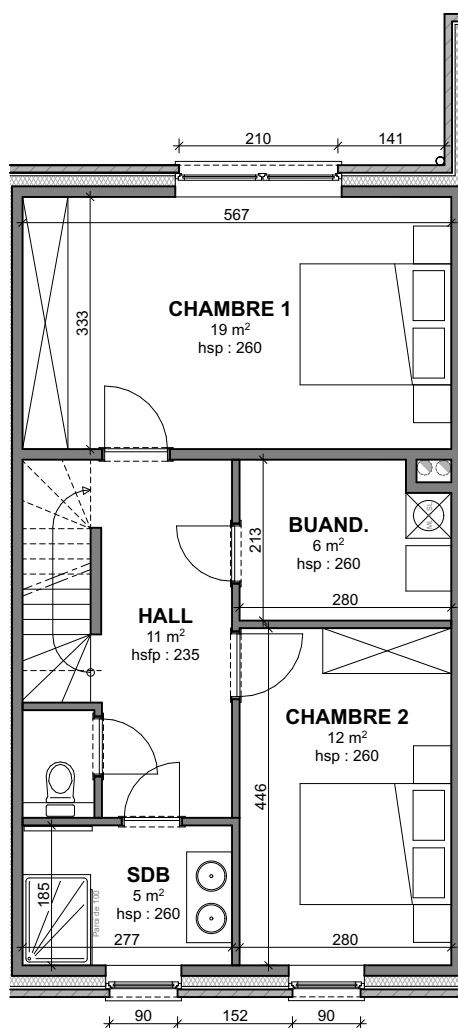


# LOT 15



Vue en plan - Rez

# LOT 15



Vue en plan - Etage 1

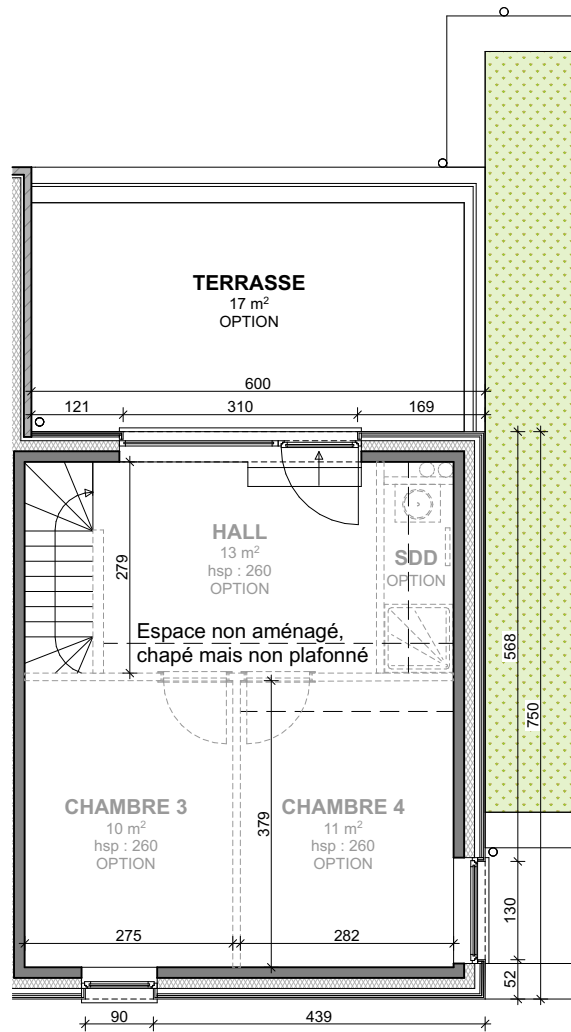
Contactez notre Sales Consultant

T +32 4 268 03 20

matexi.be - info@matexi.be



# LOT 15



Vue en plan - Etage 2